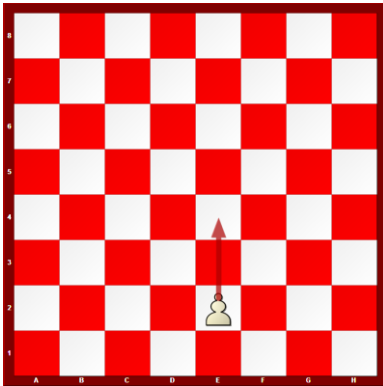
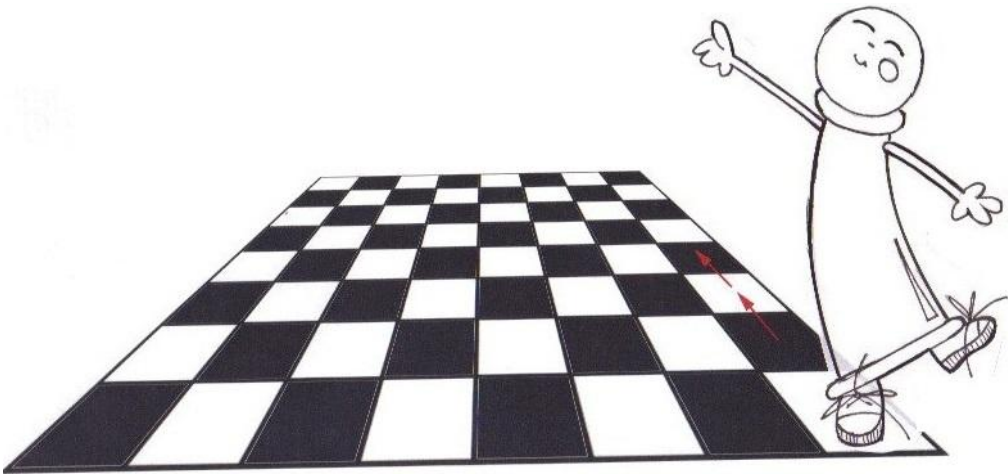
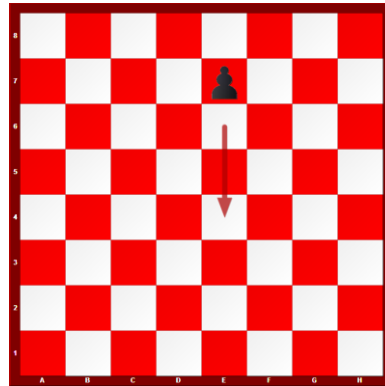


The Pawn can move in just 1 way forward is the way they play.



The arrow shows how the  
White Pawn can move  
forward

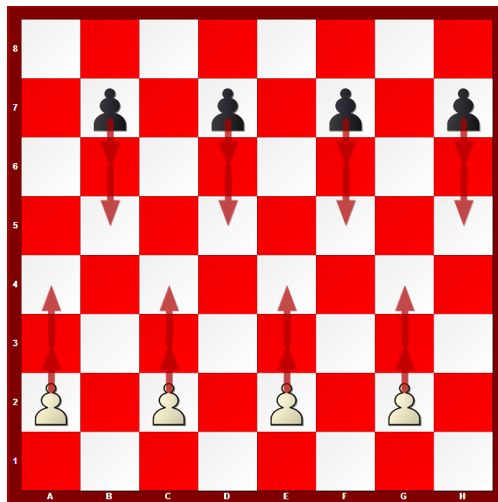
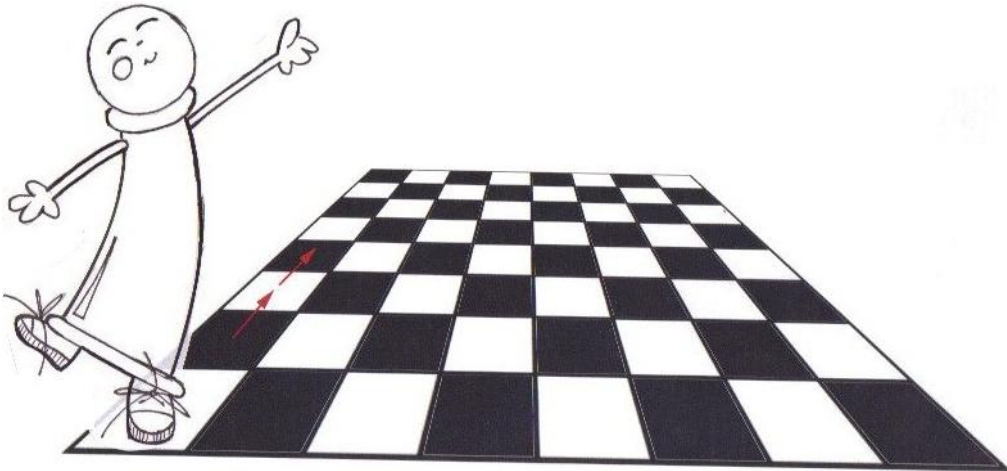


The arrow shows how the  
Black Pawn can move  
forward

### Challenge 17- 1000pts

Move all the White and Black Pawns forward.

A Pawn can move 1 square or 2, that is what a Pawn can do.



A Pawn can move 1 square or 2 squares

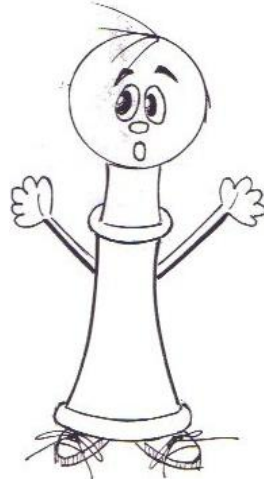
### Challenge 18- 1000pts

Move all of the White and Black pawns 1 square. Move all of the White and Black pawns 2 squares

If a Pawn has moved before it can't move 2 squares anymore.

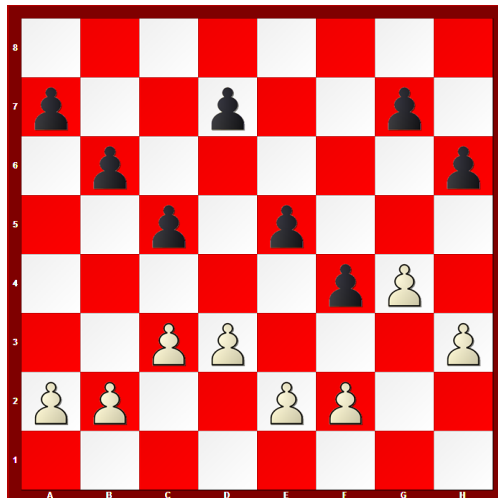
A Pawn can on move forward 2 squares only if it on it is starting square.

White Pawns can move 2 squares only if they are on row 2. Black pawns can move 2 squares only if they are on row 7.



Only the circled Pawns can move 2 squares.

### Challenge 18: 1000 pts



Circle only the Pawns that can move 2 squares.